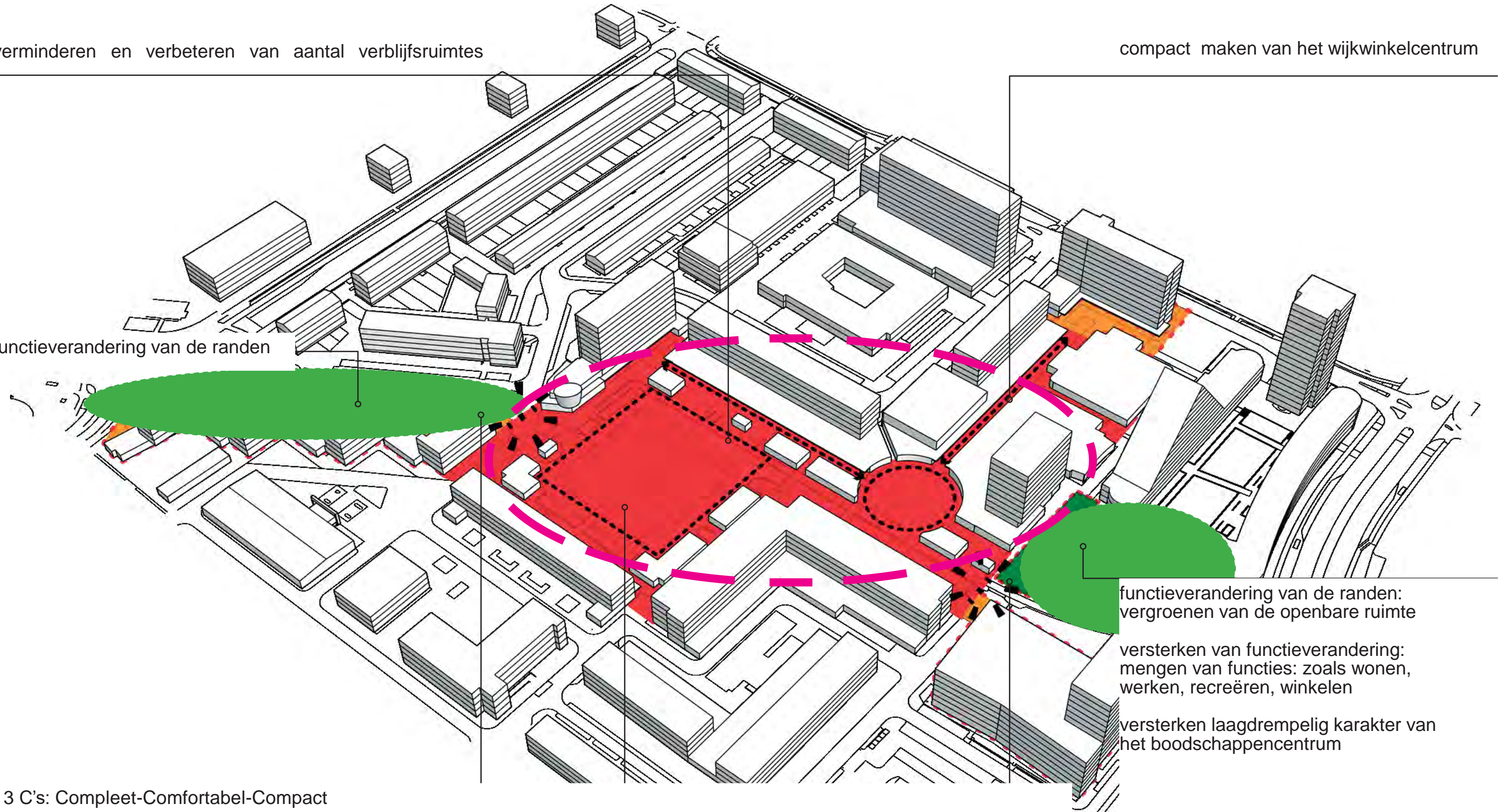


verminderen en verbeteren van aantal verblijfsruimtes

compact maken van het wijkwinkelcentrum

functieverandering van de randen



functieverandering van de randen:
vergroenen van de openbare ruimte

versterken van functieverandering:
mengen van functies: zoals wonen,
werken, recreëren, winkelen

versterken laagdrempelig karakter van
het boodschappencentrum

3 C's: Compleet-Comfortabel-Compact
"het creëren van waardevolle ontmoetingsplekken"

de meest externe gebieden krijgen een andere functie

focus op twee pleinen: parkeerplein i.c.m. verblijven
en horecaplein

entree's van het winkelgebied benadrukken



THEMA VERKEER



THEMA VERDUURZAMEN

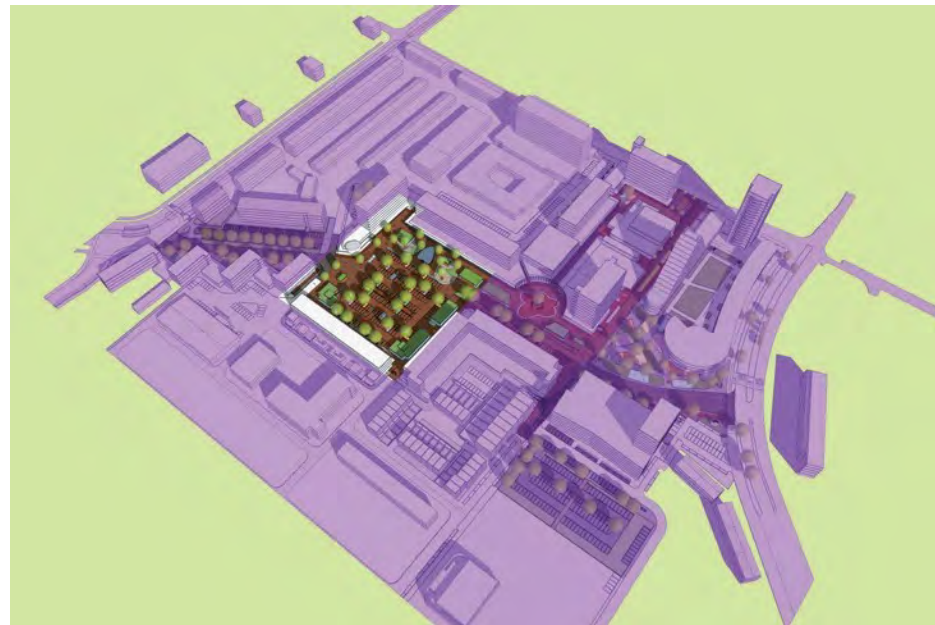


THEMA BELEVING

DE DRIE THEMA'S



deelgebied A
Noord en Zuid



deelgebied B
Julianaplein



deelgebied C
winkels

DE DRIE DEELGEBIEDEN

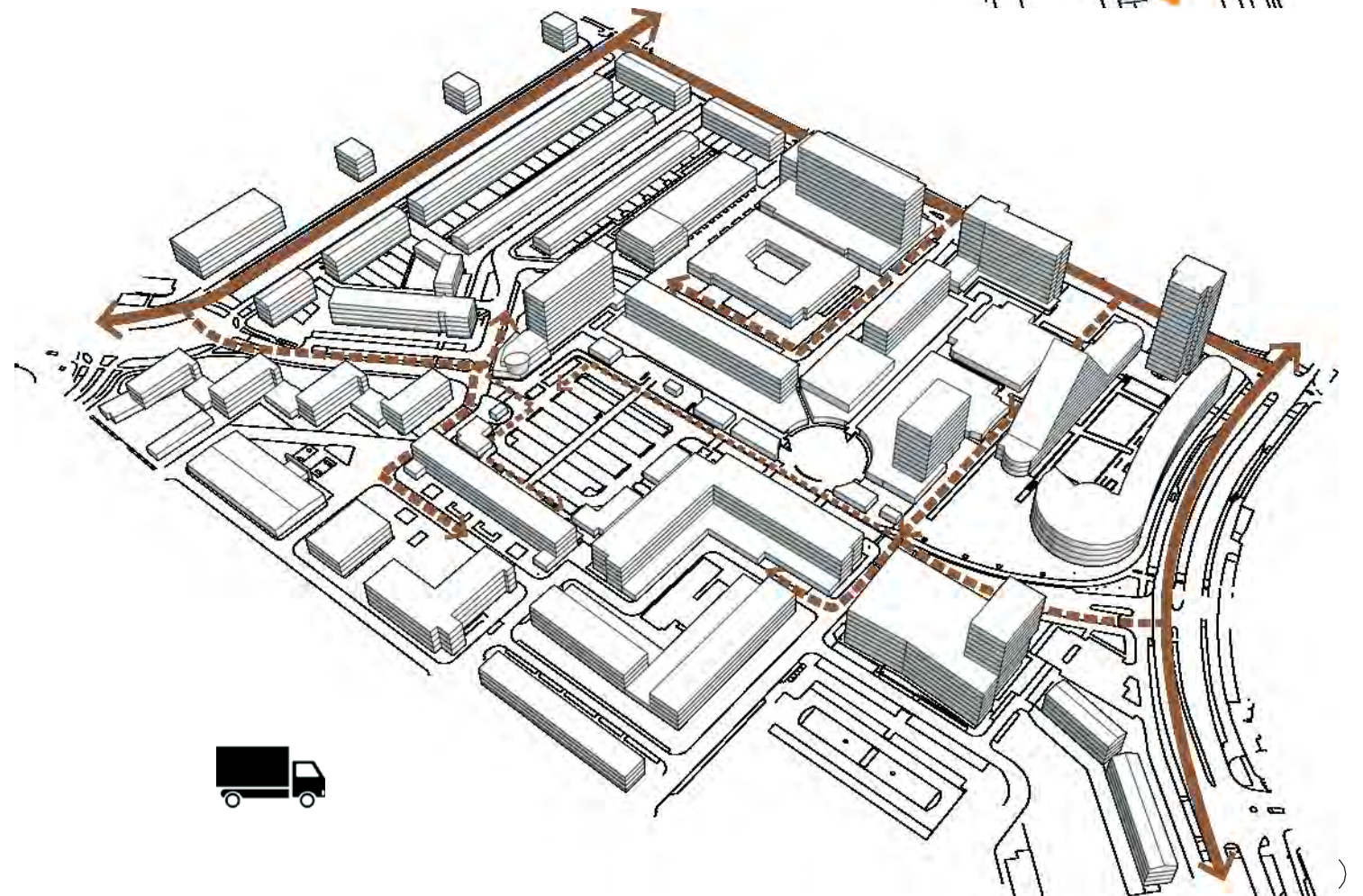
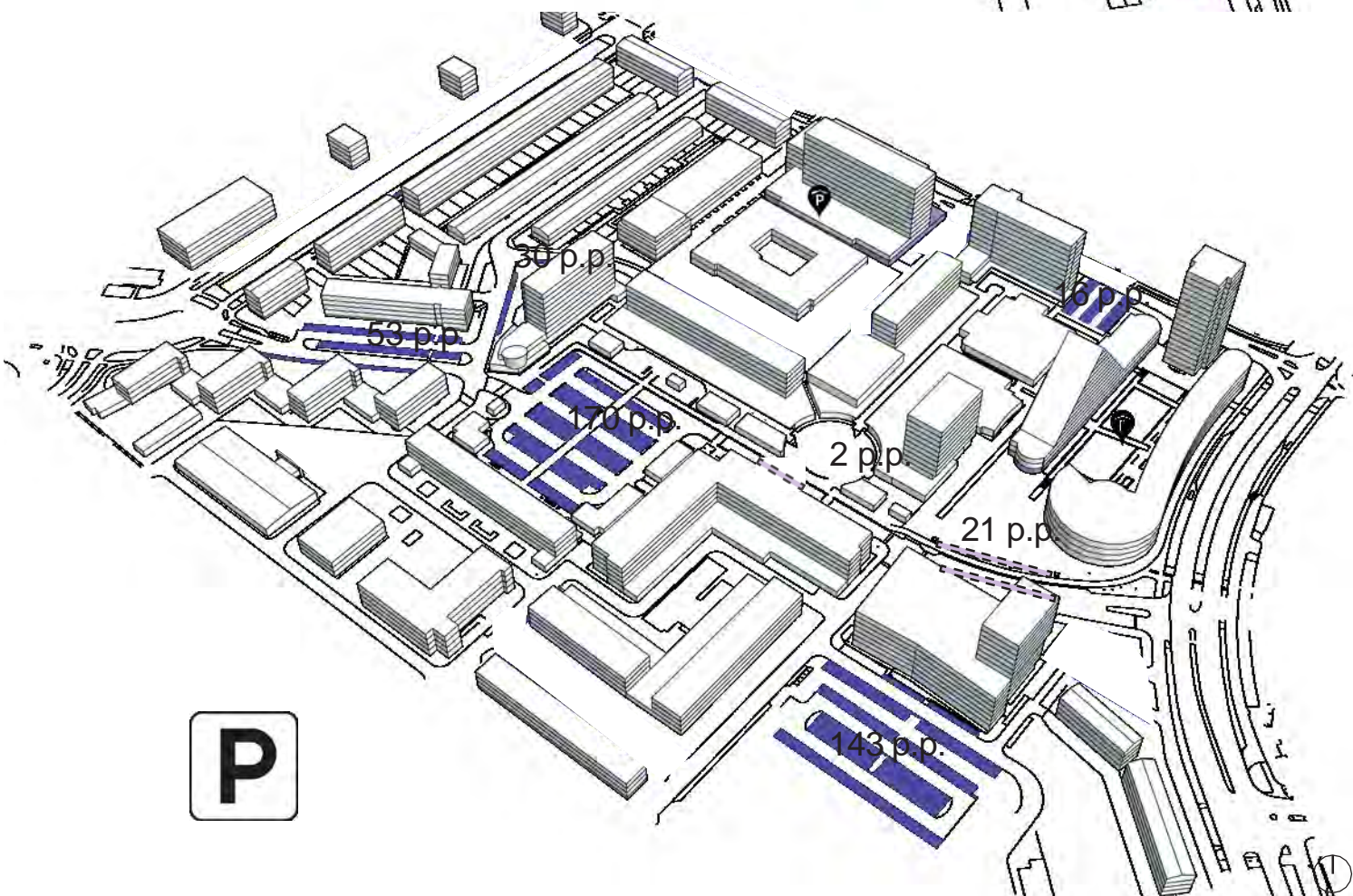
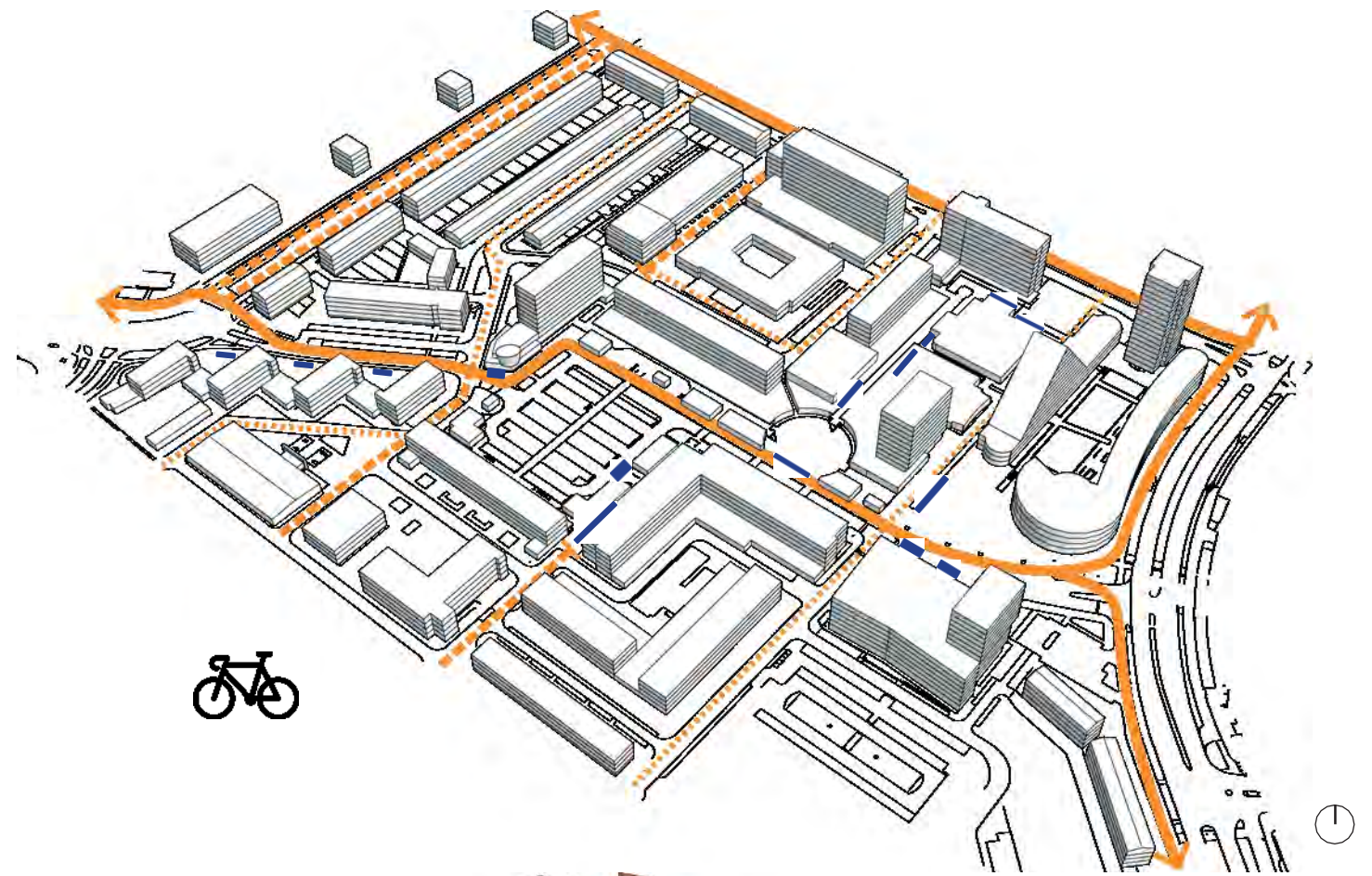
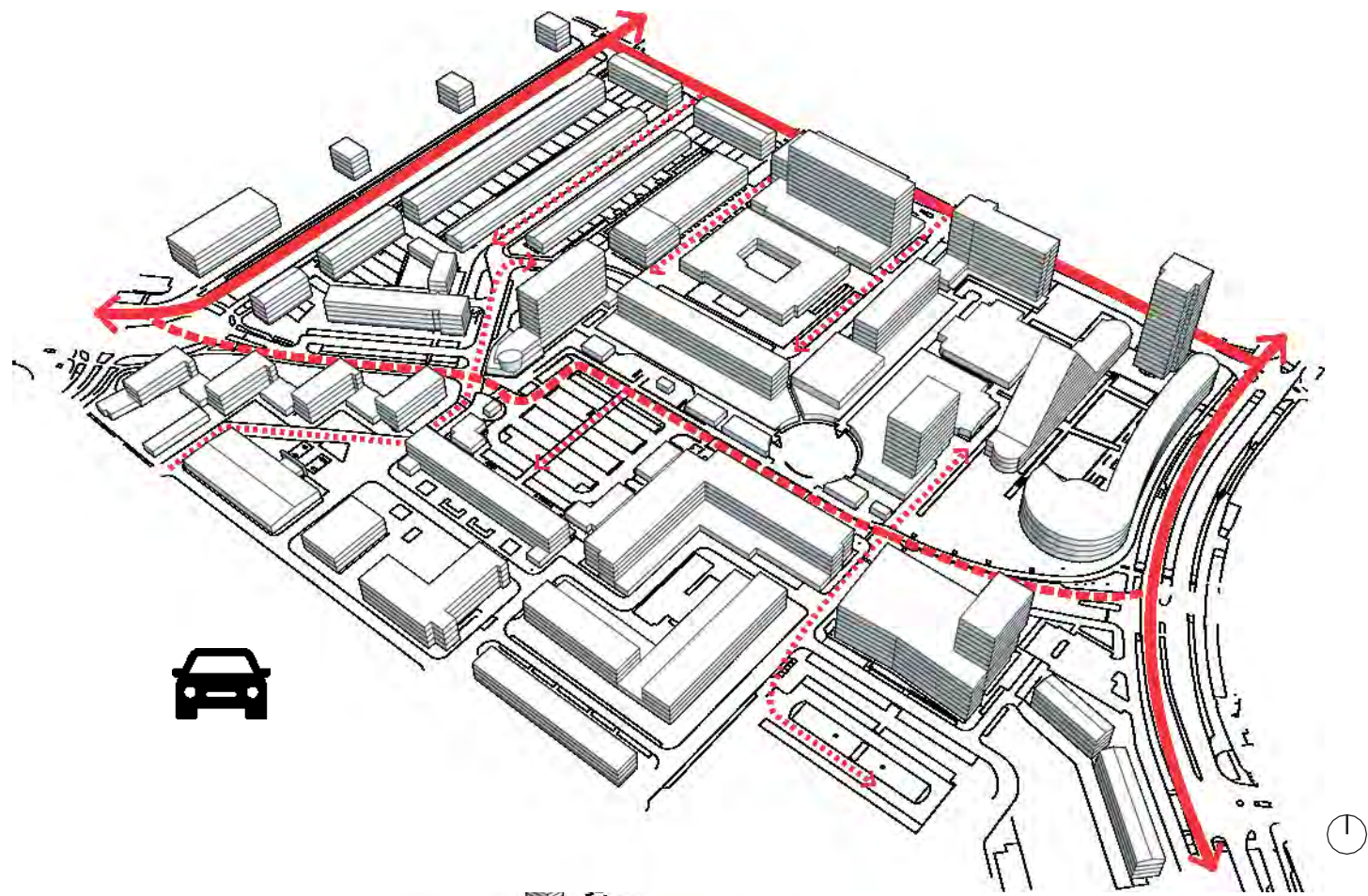


vogelvlucht

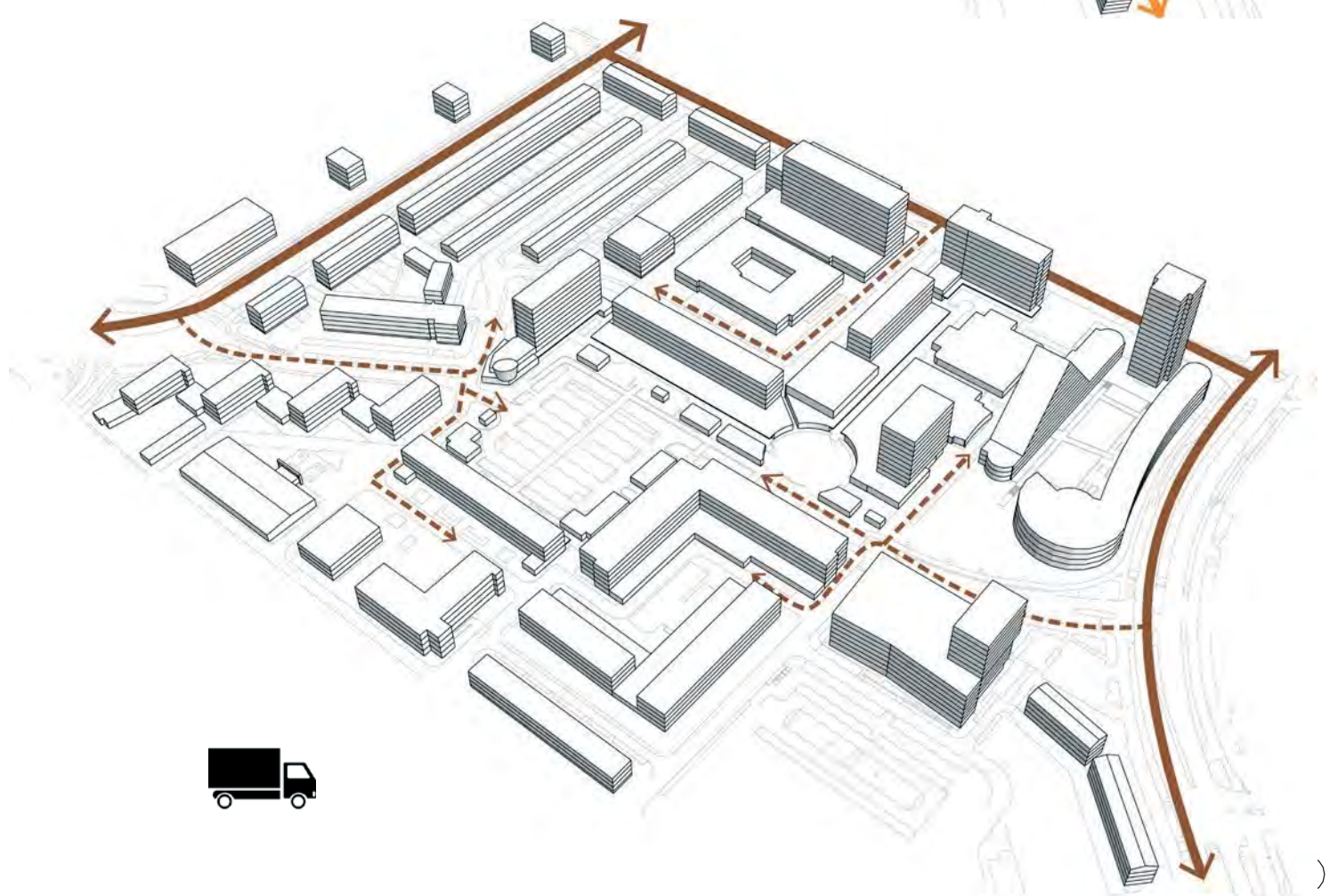
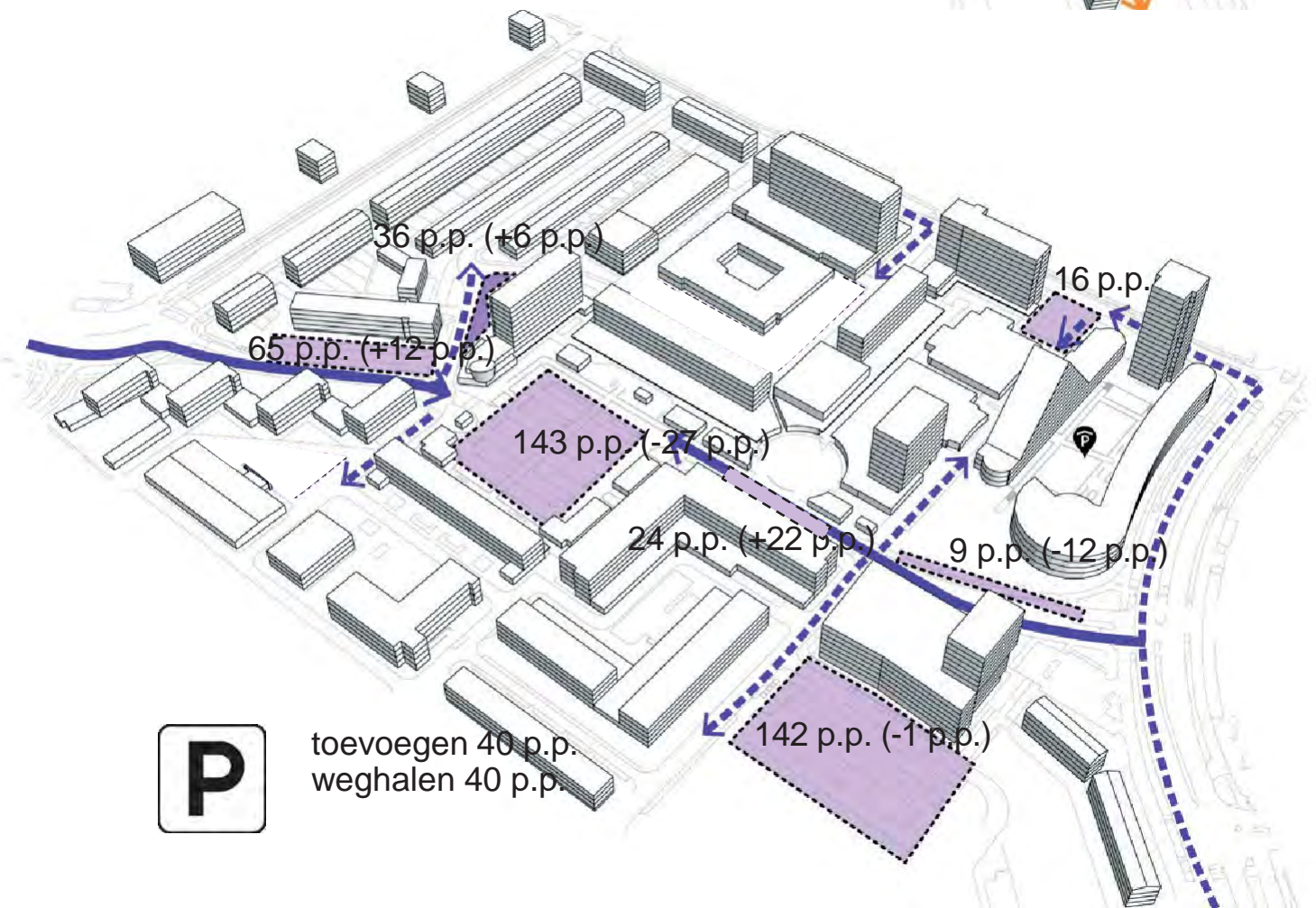
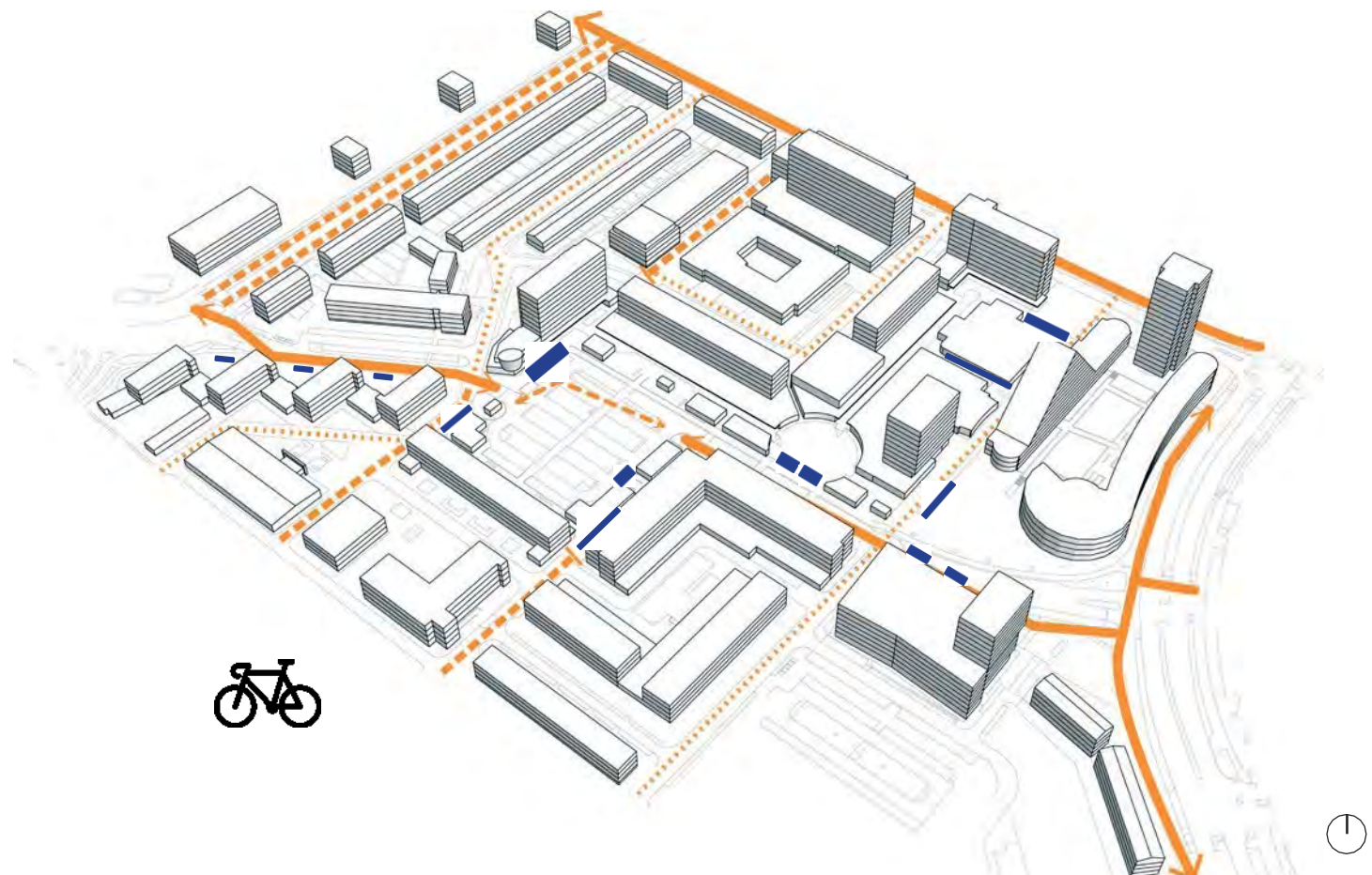
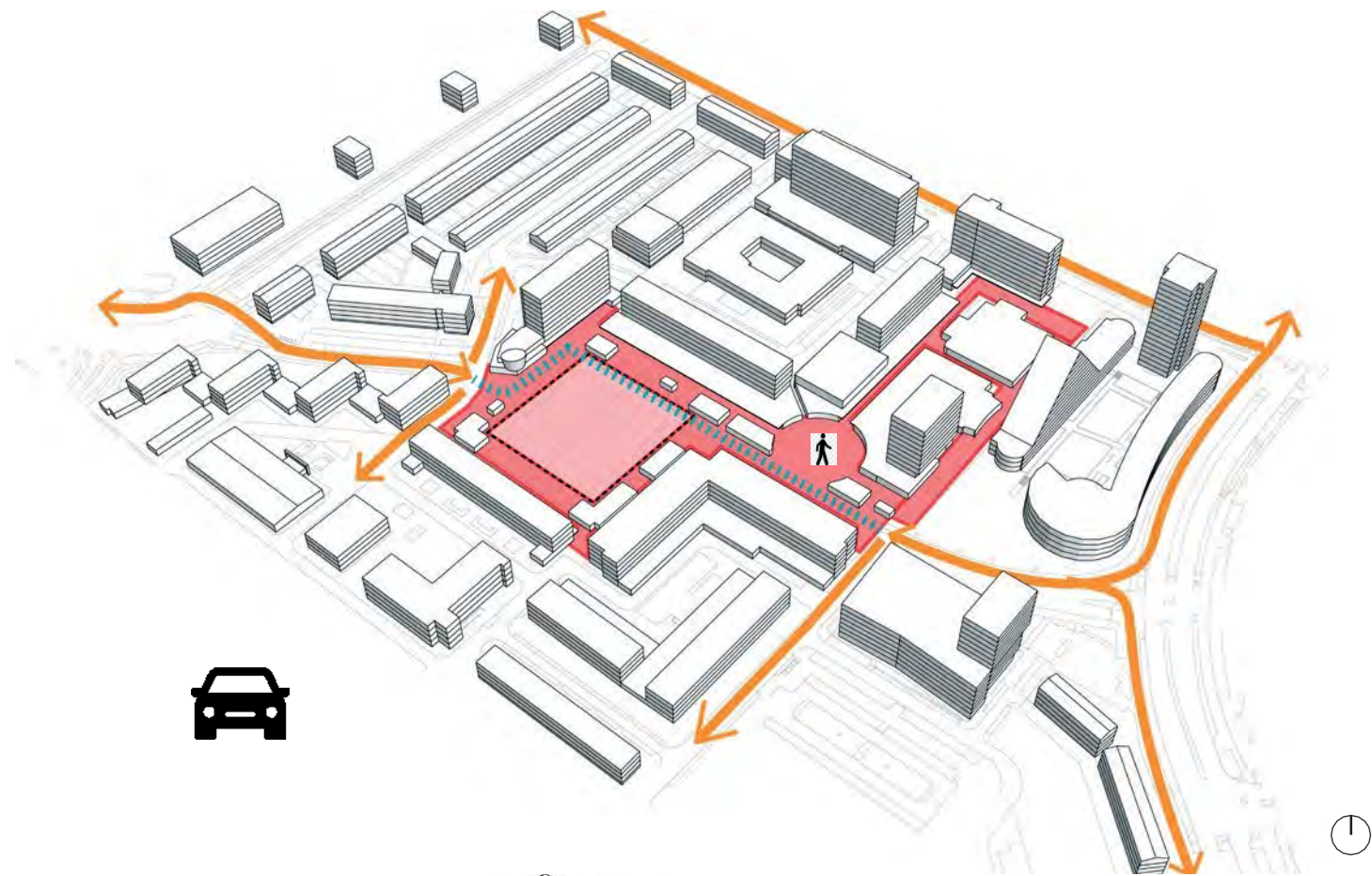


Plan





verkeer en parkeren bestand





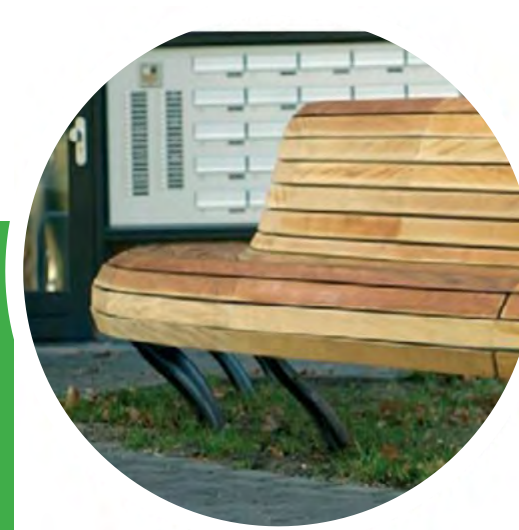
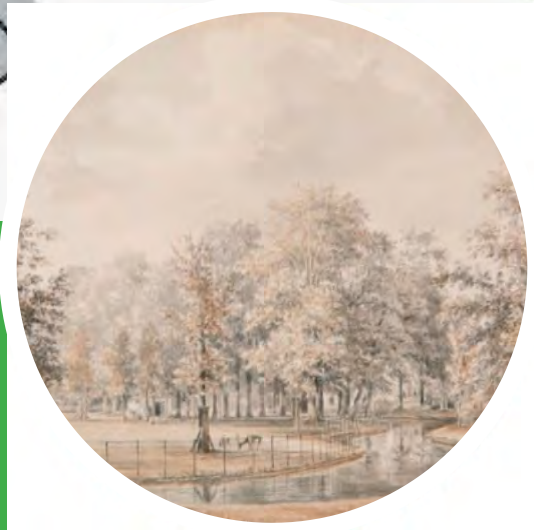
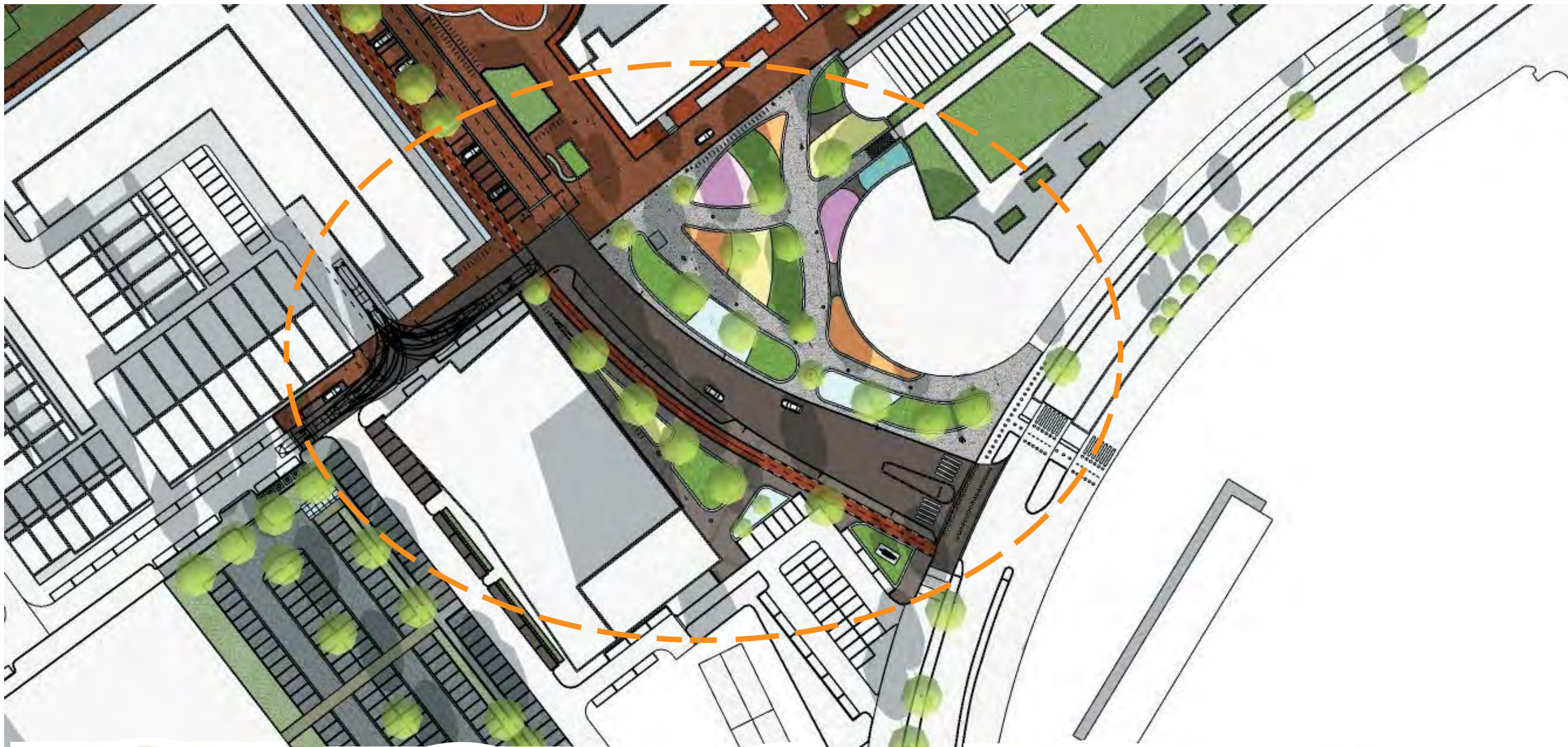
— plangebied aanpak
openbare ruimte

plangebied

deelgebied A: Zuid









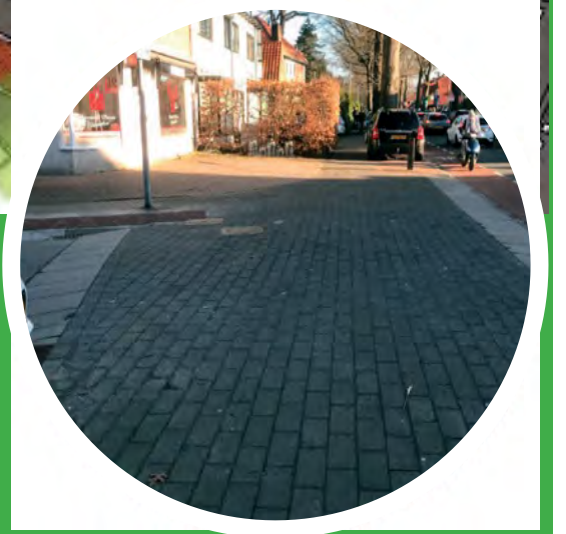
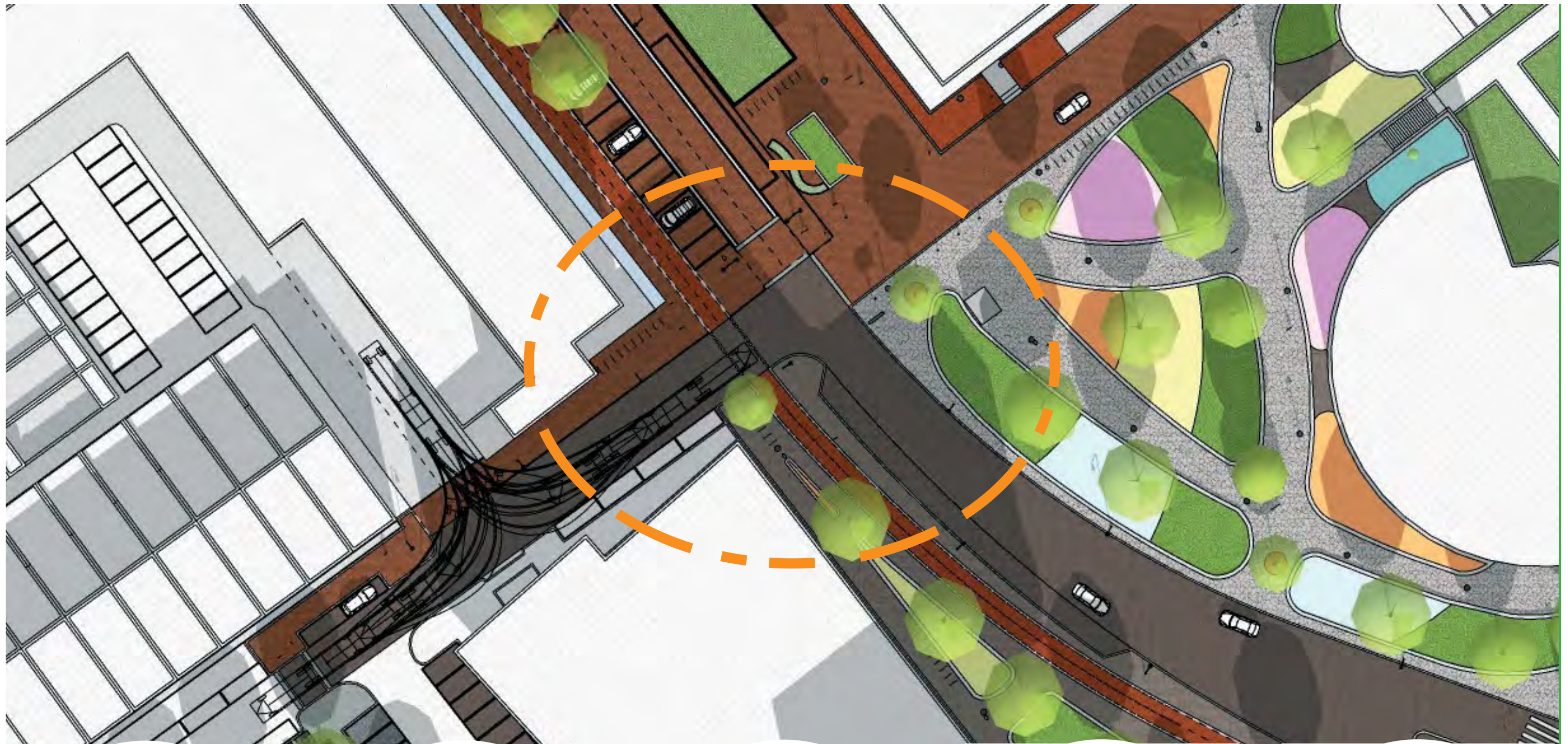






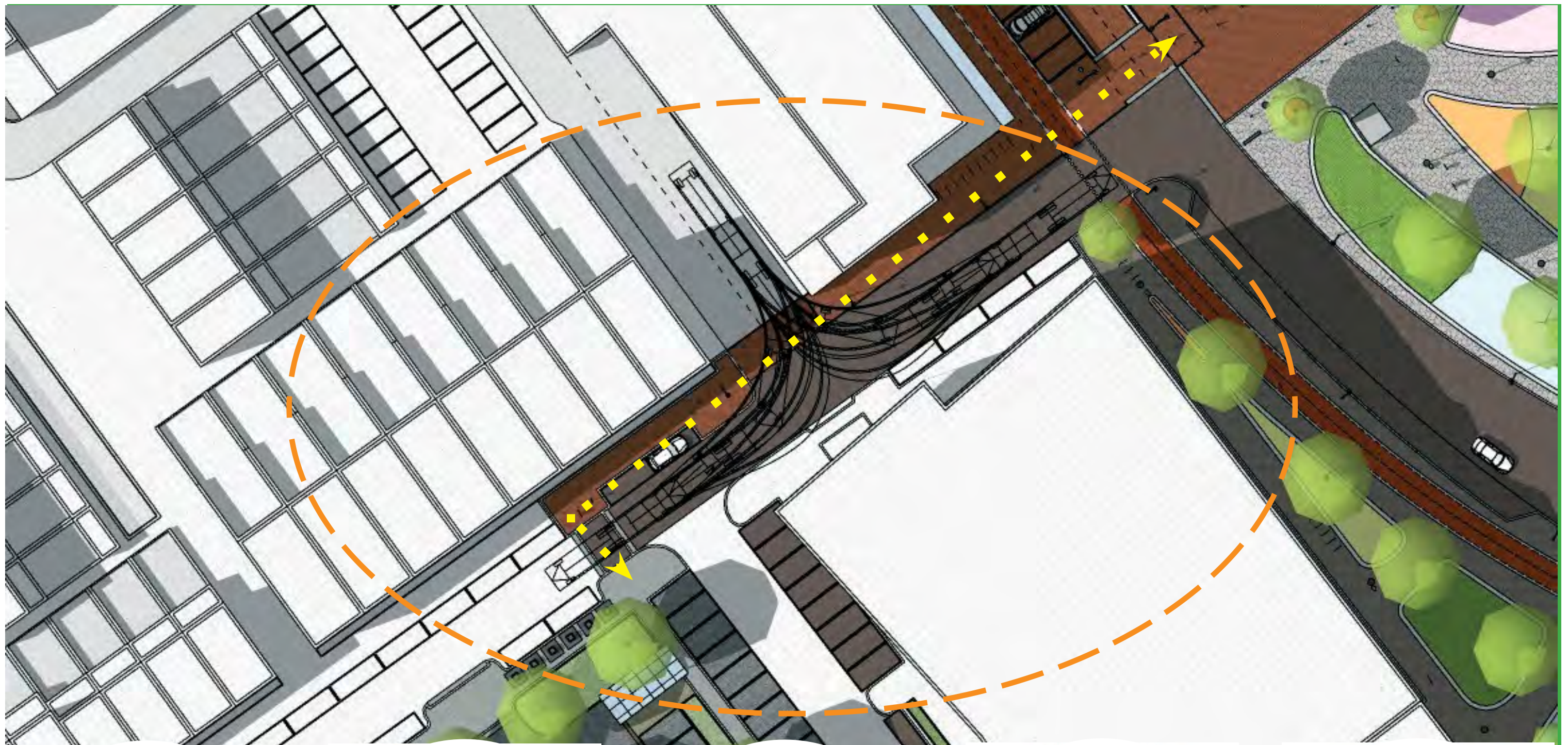




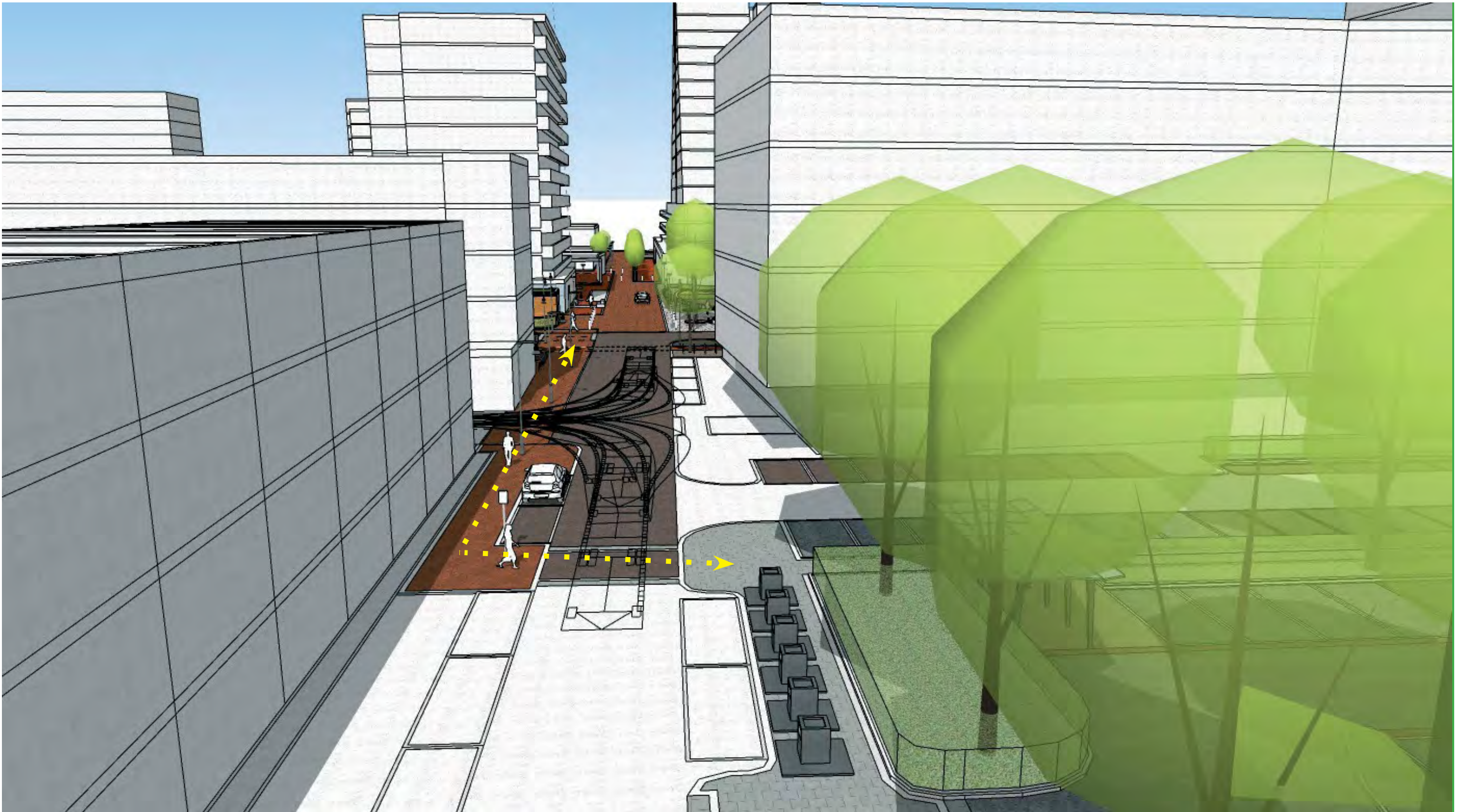


















deelgebied A: Noord





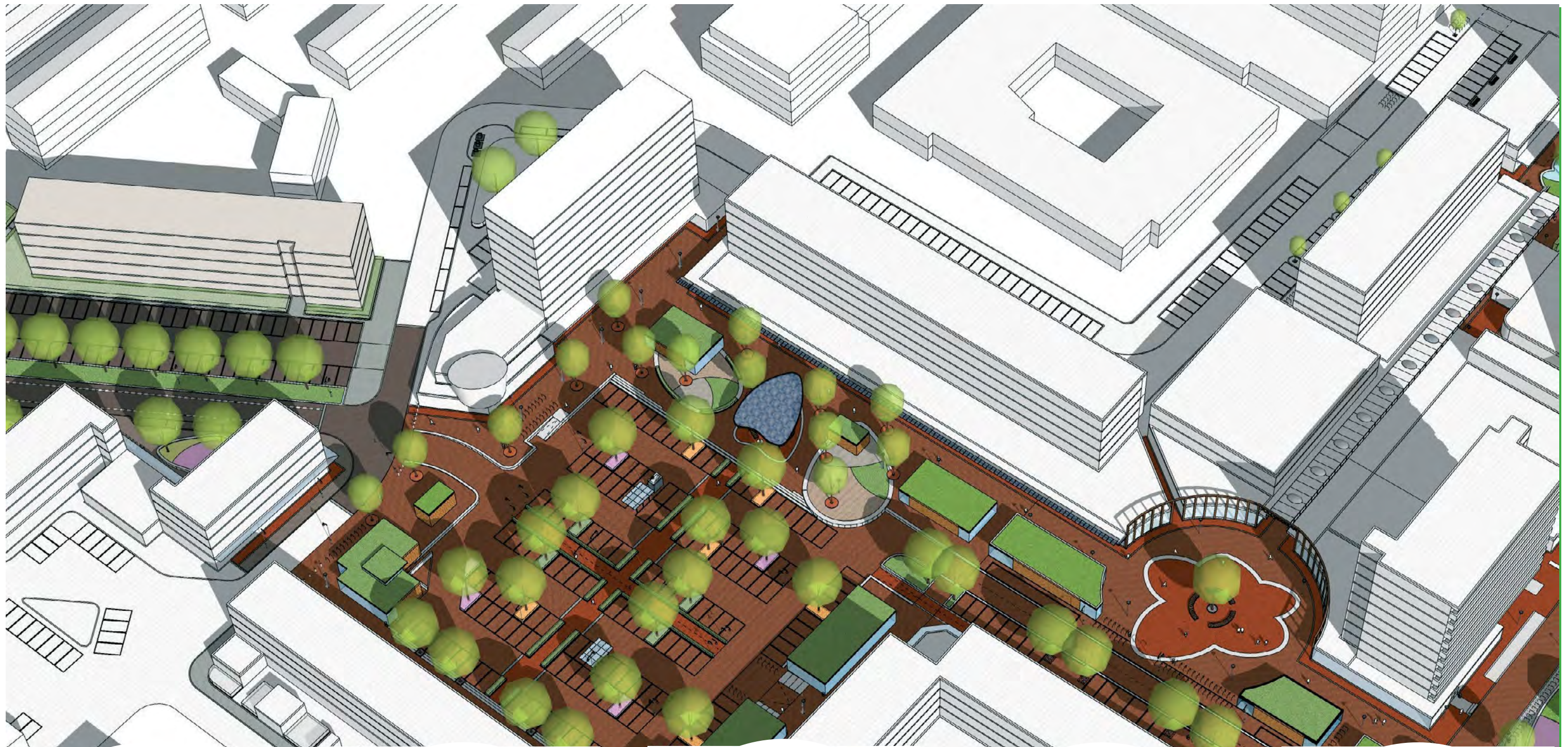


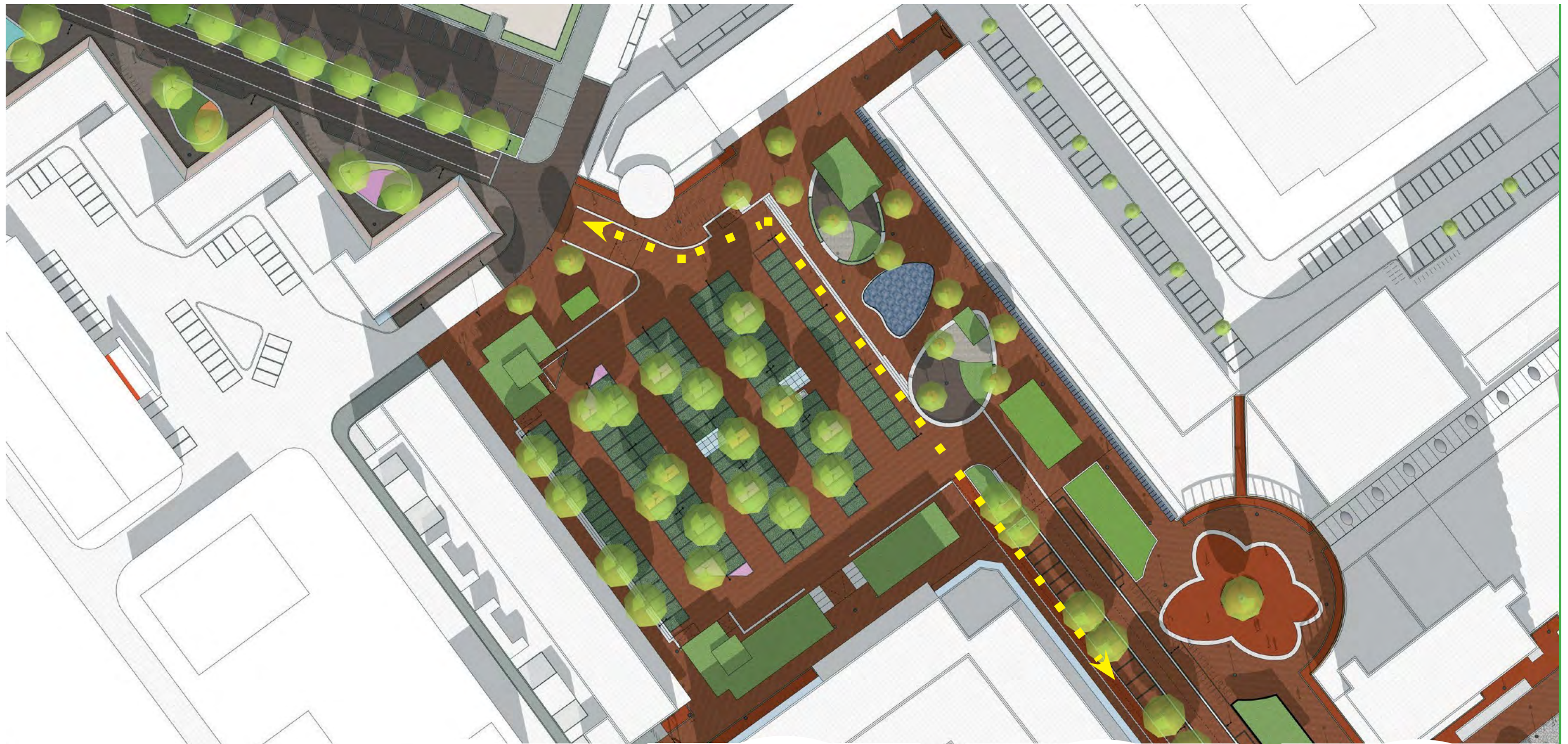




deelgebied B:
Julianaplein







gebakken straatsteen



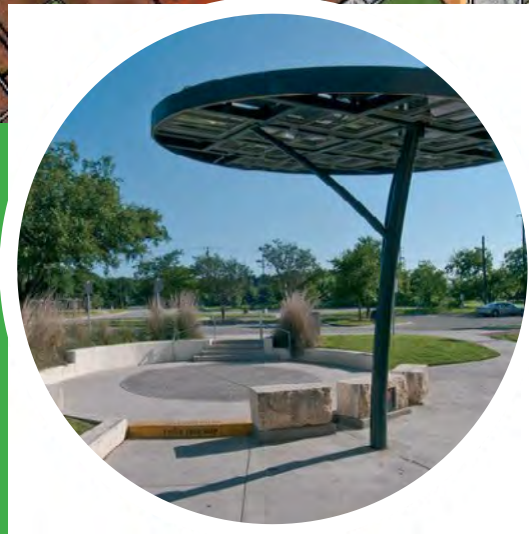
betonnen straatsteen



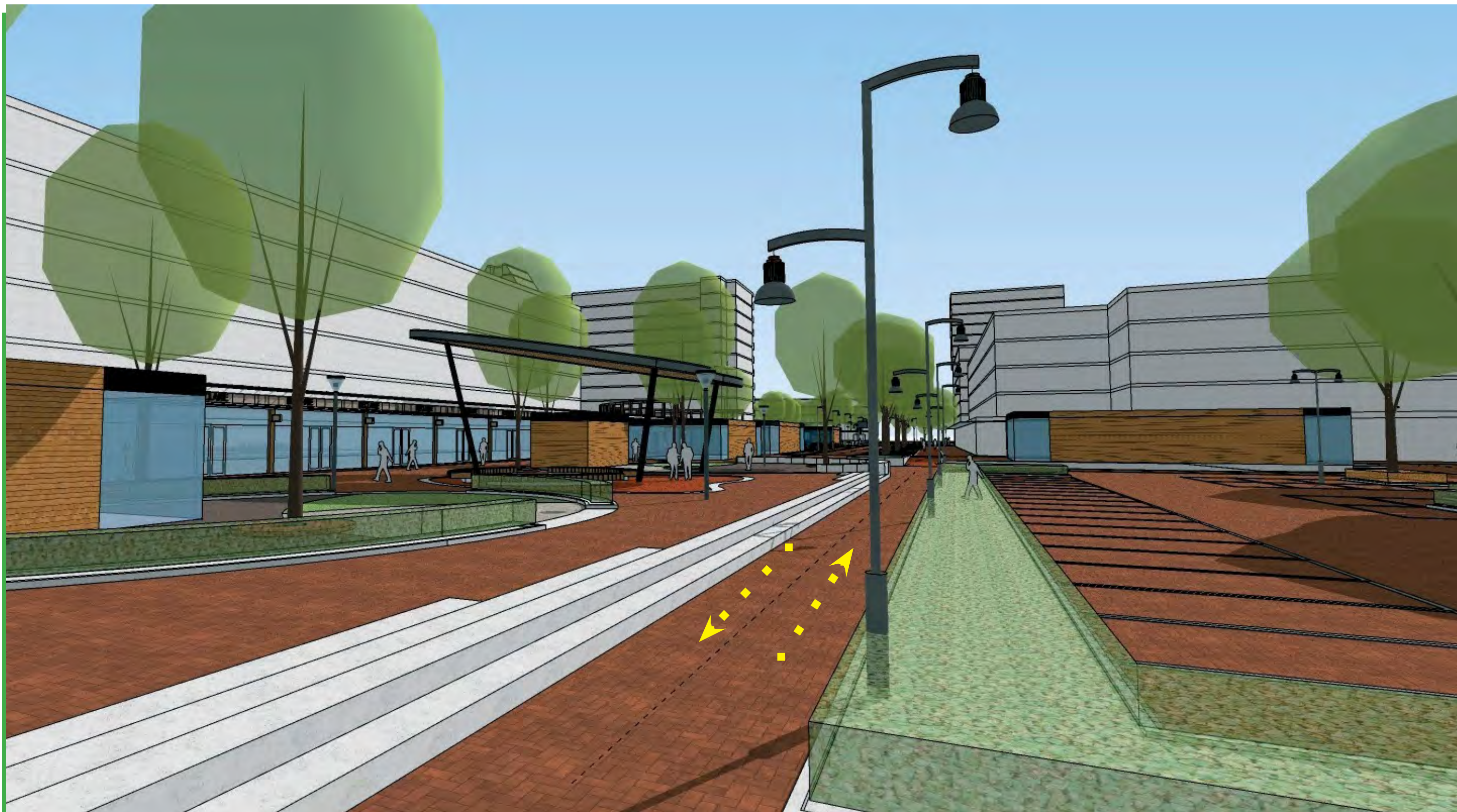
grasbetonsteen

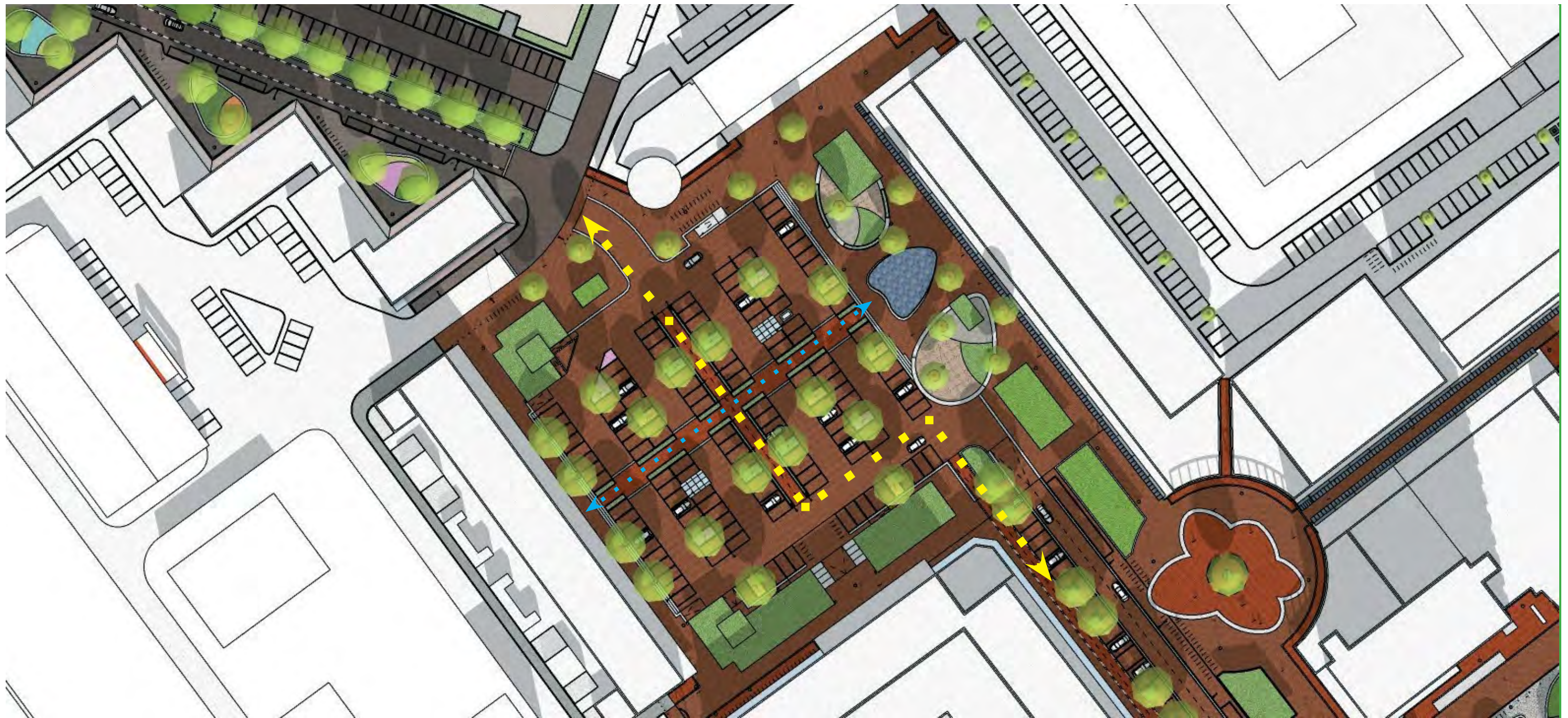






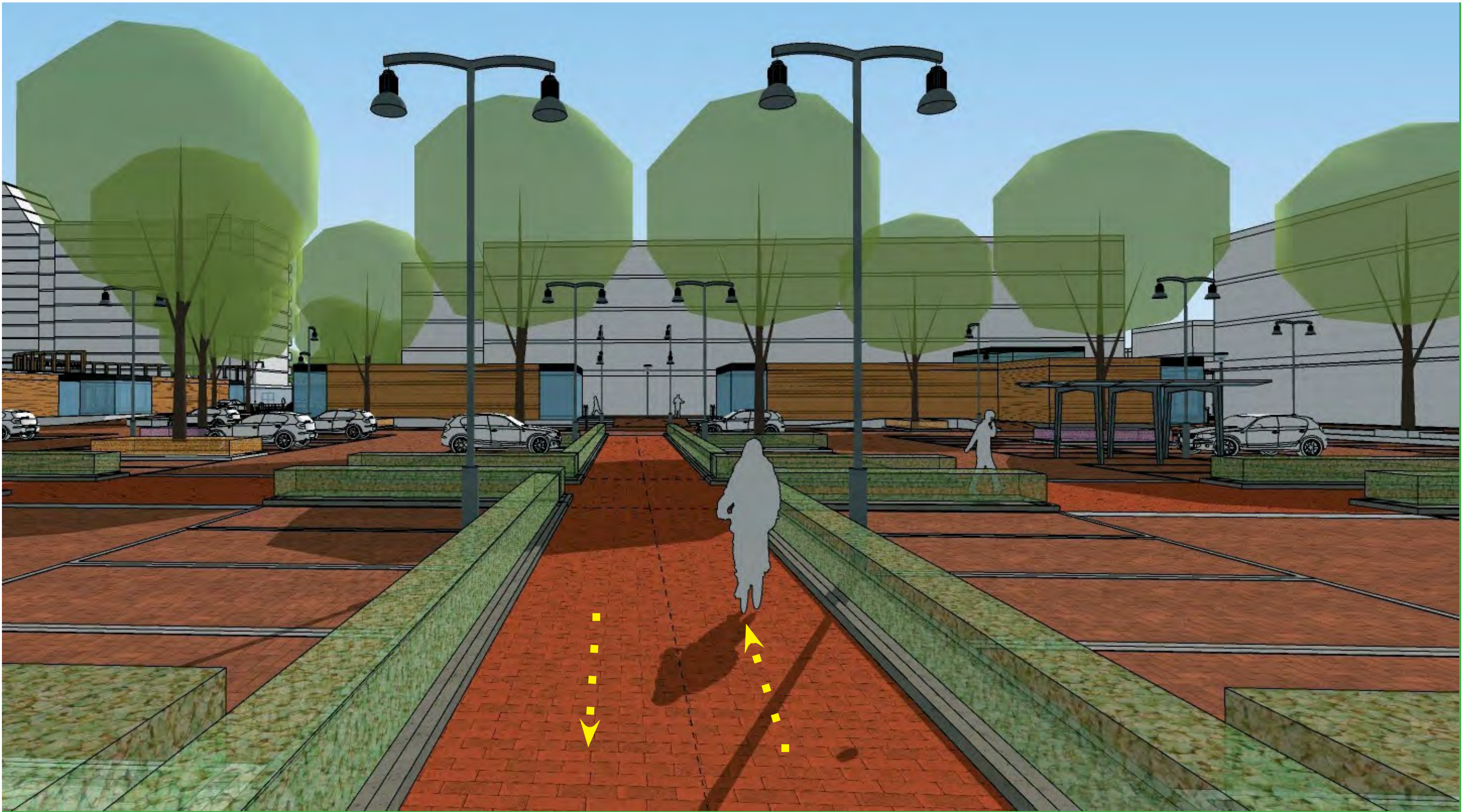
















1

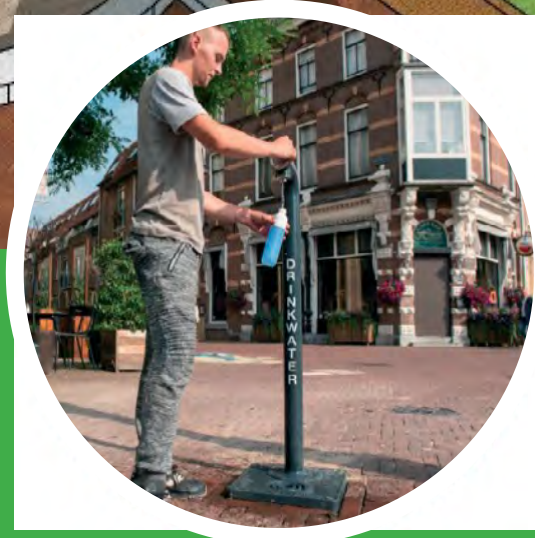


2













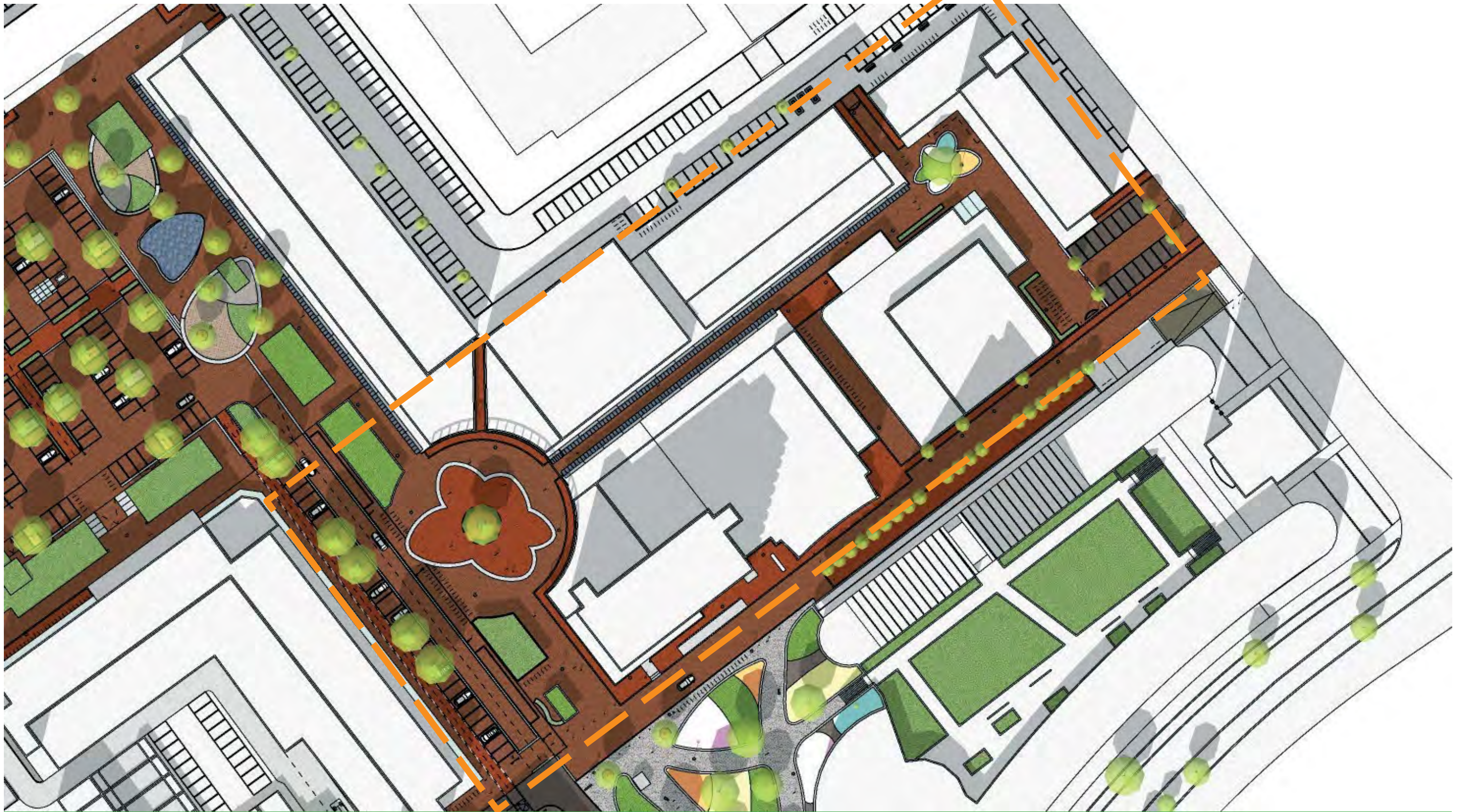


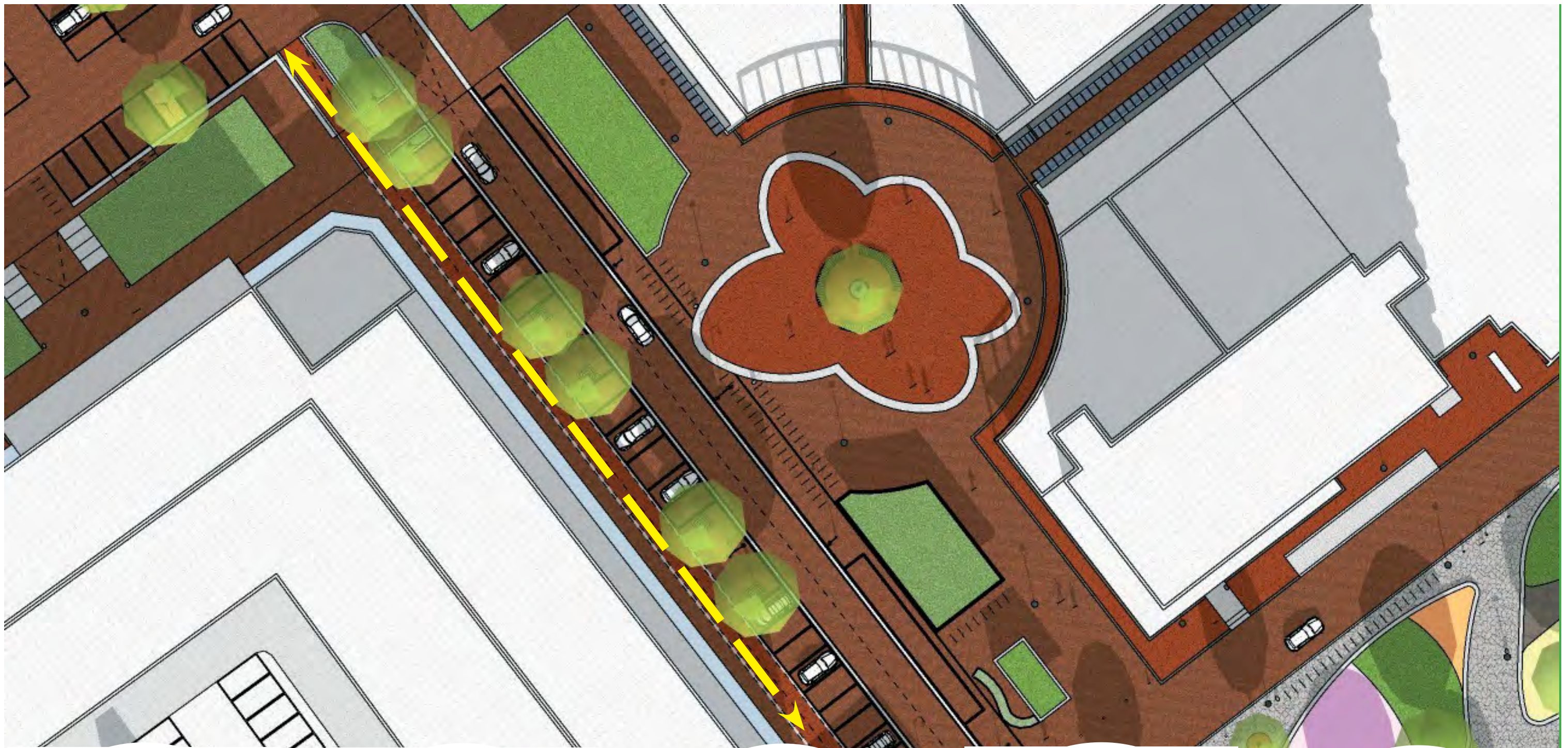




deelgebied C:
winkelgebied



















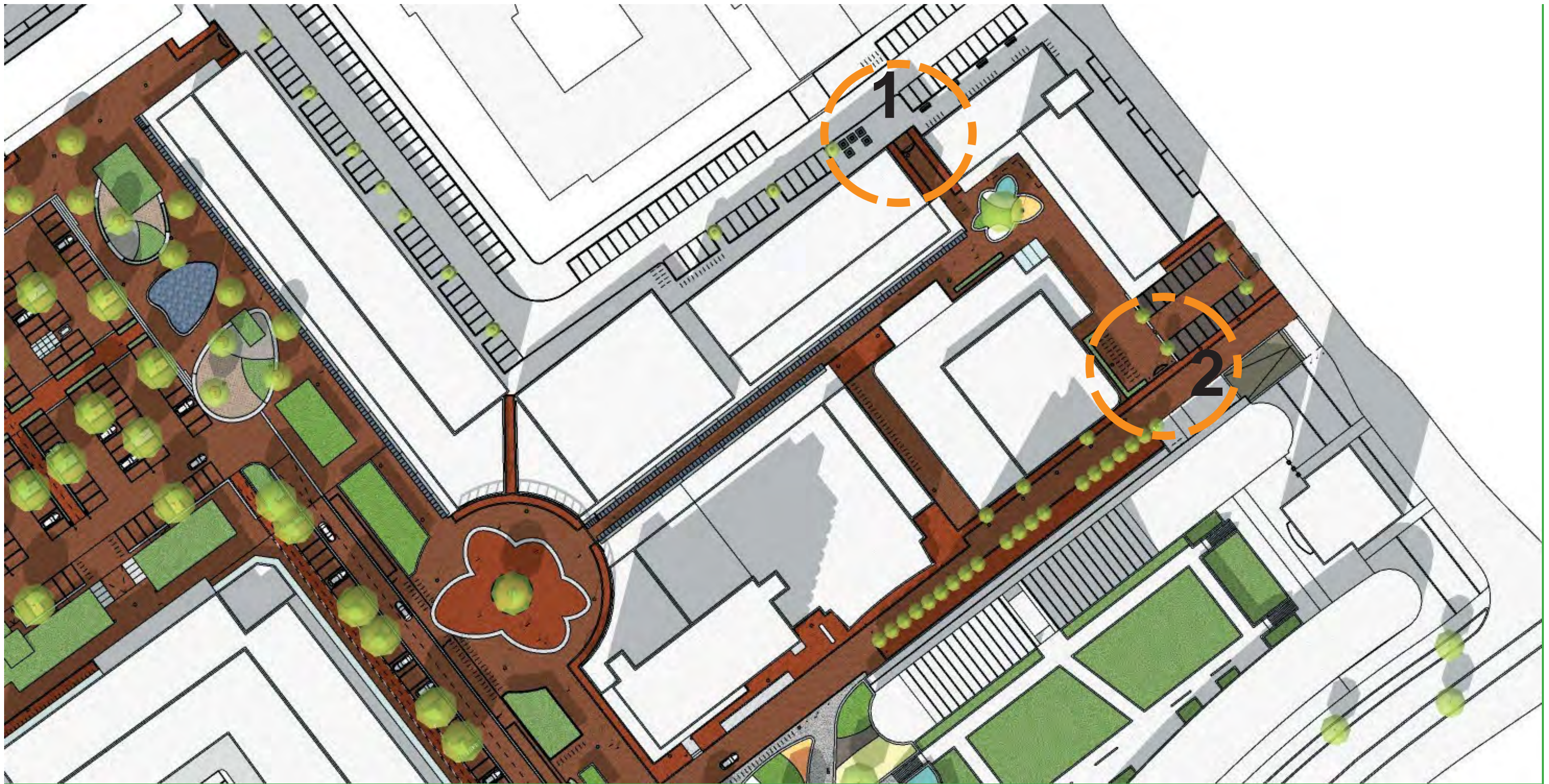












1



2





vogelvlucht

